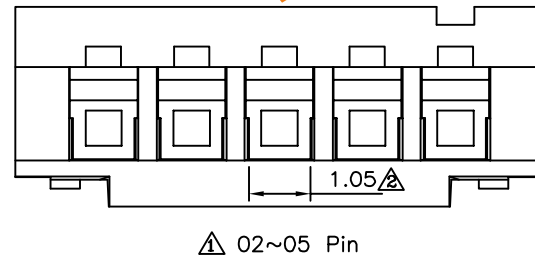
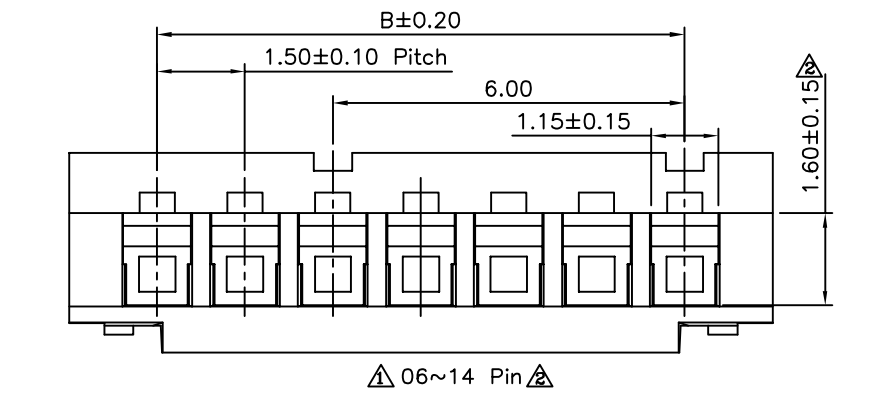
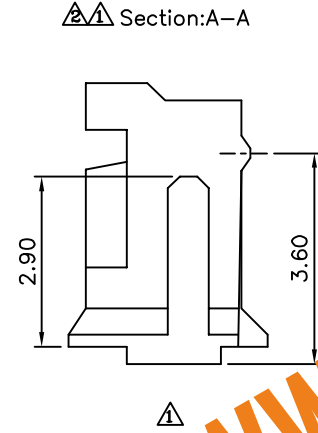
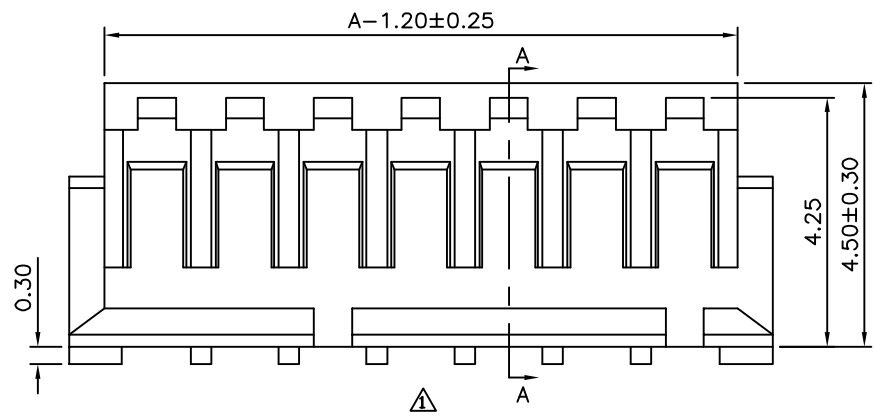


△ SPECIFICATION

Current Rating:1A AC/DC
 Voltage Rating:50V AC/DC
 Withstanding Voltage:500V AC/Minute
 Contact Resistance:20 Milliohms Max.
 Insulation Resistance:500 Megaohms Min.
 Temperature Range:-25°C~+85°C
 Material:PA66(UL94V-0),Nature
 RoHS Compliant



WWW.ASA-Elec.com

Pin	A	B
02	4.50	1.50
03	6.00	3.00
04	7.50	4.50
05	9.00	6.00
06	10.5	7.50
07	12.00	9.00
08	13.50	10.50
09	15.00	12.00
10	16.50	13.50
11	18.00	15.00
12	19.50	16.50
13	21.00	18.00
14	22.50	19.50

ASA **Electronic**
 WWW.ASA-Elec.com
 AsA Electronic Co.
 Tel : (+98) 21 66 73 56 82 Mob : (+98) 912 03 161 02

DRAWING No.		APPROVED BY		UNLESS OTHERWISE SPECIFIED TOLERANCES ARE X ±0.25 .XX ±0.20 X ±2 .XX ±1
01299		EMILY		
		CHECKED BY		
		HZF		
		DRAWING BY		
		GAO		
SCALE	NONE	REV.	A2	UNIT mm

△ A2	Modify Data	HZF	03/07/2013
△ A1	Modify Data	HZF	05/28/2010
△ A0	NEW RELEASE	HZF	2004/10/07
NO. REV.	REVISIONS	CHK	DATE